



**KMI Group**





## **Company Profile**

KMI Group is a world leading designer and manufacturer of slewing drives that are widely used in a variety of industries, most notable for solar generating systems utilizing technology of Photovoltaics (PV) or Concentrated Solar Power (CSP) in which the Company's specialties are applied as a key device for tracking/heliostat system of Concentrated Photovoltaics (CPV), Concentrated Solar Thermal (CST) or Concentrated Photovoltaics & Thermal (CPT) system.

We are an American owned enterprise with global presence. Through reorganization in 2009, the corporate Group establishes three fully owned subsidiaries namely KMI North America, KMI Europe and KMI China. As the world manufacturing base, Research&Development center and Marketing & Sales division, KMI China is pleased to continuously serve our valuable customers and provide our quality products to meet or exceed our customer's expectations. Up to 2010, we had supplied more than 110,000 units of assorted slew drives to all major markets worldwide.

## Company History

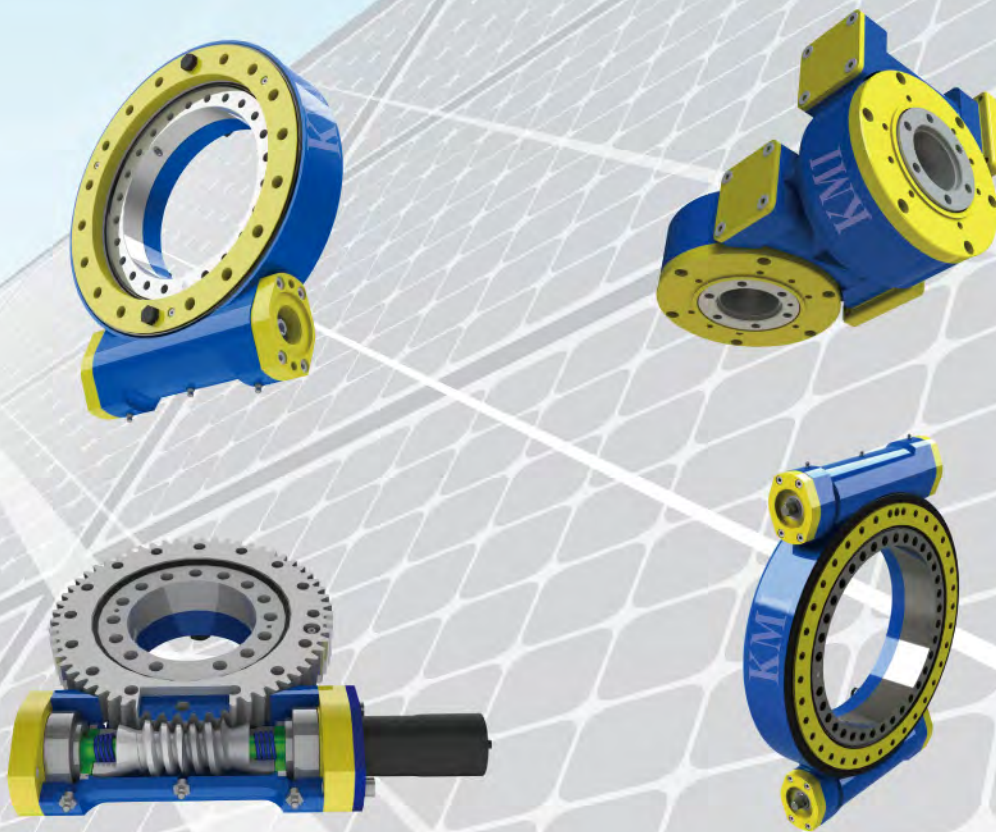
KMI Group (was named Kinematics Manufacturing, Inc.) began in 1996 as a manufacturing facility outside Los Angeles. The founder, Mr. Brent Morgan, designed special-purpose gearboxes, machined, assembled and shipped them one at a time from a small space.

Mr. Morgan listened closely to his customers' performance problems and found innovative gearbox solutions. His reliable, patented, low-cost designs and highly responsive approach to customer service are the foundation of KMI Group today's success.

With multinational staff members and high-tech manufacturing equipment, Kinematics is one of the world's largest slewing drive manufacturers having a production capacity of over 2,000 units per week.

KMI Group delivers custom-engineered solutions to customers in more than 30 countries worldwide from its modern manufacturing facility in Central China, Marketing & Sales offices and distribution warehouses in the North America and Europe.

KMI Group's team is committed to continuous improvement and the strictest quality control standards. These characteristics enable to keep prices low and quality high. We look forward to working on all of our customers' growing demands.





# Best Slewing Drives in the World

## **KMI North America**

Kinematics Manufacturing, Inc.  
Telephone: +1-623-780 8944  
Email: [info@kinematicsmfg.com](mailto:info@kinematicsmfg.com)

## **KMI Europe/Middle East**

Kinematics Manufacturing Co.  
Telephone: +20-104-802 227  
Email: [info@kinematicsmfg.com](mailto:info@kinematicsmfg.com)

## **KMI China** (Manufacturing Base, R & D Center and Regional Marketing & Sales Division)

Jiangyin Kinematics Manufacturing Co., Ltd.  
Xiagang Industrial Park, Xiagang, Jiangyin, Jiangsu, China 214442  
Telephone: +86-(0)510-8696 5383  
Email: [sales@kmimfg.com](mailto:sales@kmimfg.com)

Web: [www.kinematicsmfg.com](http://www.kinematicsmfg.com)



# KMI Group



## Best Slewing Drives in the World

### **KMI North America**

Kinematics Manufacturing, Inc.  
Telephone: +1-623-780 8944  
Email: [info@kinematicsmfg.com](mailto:info@kinematicsmfg.com)

### **KMI Europe/Middle East**

Kinematics Manufacturing Co.  
Telephone: +20-104-802 227  
Email: [info@kinematicsmfg.com](mailto:info@kinematicsmfg.com)

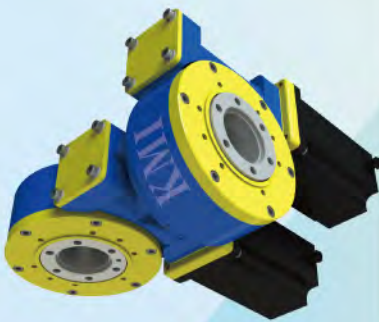
### **KMI China** (Manufacturing Base, R & D Center and Regional Marketing & Sales Division)

Jiangyin Kinematics Manufacturing Co., Ltd.  
Xiagang Industrial Park, Xiagang, Jiangyin, Jiangsu, China 214442  
Telephone: +86-(0)510-8696 5383  
Email: [sales@kmimfg.com](mailto:sales@kmimfg.com)



[www.kinematicsmfg.com](http://www.kinematicsmfg.com)

# Application with Solar Energy Industry



## KMI slewing drives own remarkable performance

- Both the raceway and teeth surface are processed through quenching and have high hardness and strong rigidity
- Components go through 1,000 hours of salt spray test and anti-rust treatment
- Protection level can reach International Protection Standards IP55
- Long life cycle: 30 years of service life time
- With Self-lock function
- Various specifications and a wide variety of product lines
- High rotation accuracy:  $\pm 0.1^\circ$
- Strong resistance to environment: working temperature range from  $-40^\circ\text{C}$  to  $80^\circ\text{C}$
- Minimize maintenance requirements
- Sustain greater loading and titling moment than any competitor's products in the same category
- Optional grease with service life of 8 times comparing to the common grease



# KMI Group



## Best Slewing Drives in the World

### **KMI North America**

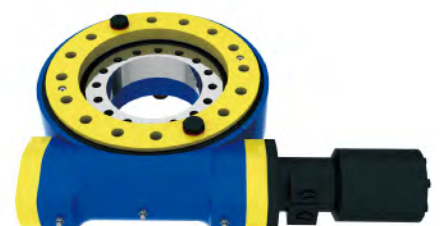
Kinematics Manufacturing, Inc.  
Telephone: +1-623-780 8944  
Email: [info@kinematicsmfg.com](mailto:info@kinematicsmfg.com)

### **KMI Europe/Middle East**

Kinematics Manufacturing Co.  
Telephone: +20-104-802 227  
Email: [info@kinematicsmfg.com](mailto:info@kinematicsmfg.com)

### **KMI China** (Manufacturing Base, R & D Center and Regional Marketing & Sales Division)

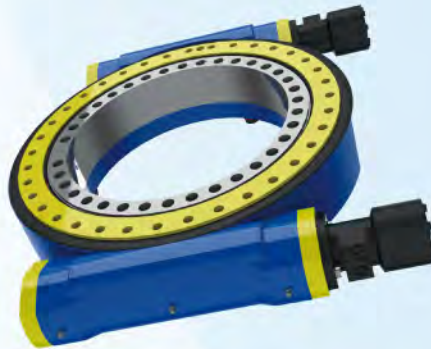
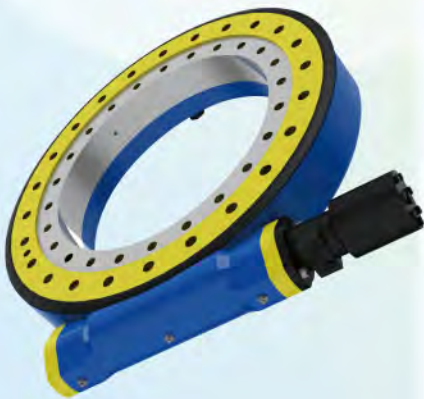
Jiangyin Kinematics Manufacturing Co., Ltd.  
Xiagang Industrial Park, Xiagang, Jiangyin, Jiangsu, China 214442  
Telephone: +86-(0)510-8696 5383  
Email: [sales@kmimfg.com](mailto:sales@kmimfg.com)



[www.kinematicsmfg.com](http://www.kinematicsmfg.com)



# Application with Engineering Machineries Industry



## **KMI slewing drives are widely used in the application of engineering machineries**

- Gardening Machineries
- Crane and Shipbuilding Industry
- Construction Machineries
- Playground Equipments
- Automatic Parking Equipments
- Mining and Tunnel Drilling Machineries
- Transportation and Conveying Equipments
- Communication, Radar Vehicles and Satellite Ground Receiving Station

## **KMI slewing drives own remarkable performance**

- Both the raceway and teeth surface are processed through quenching and have high hardness and strong rigidity
- Components go through 1,000 hours of salt spray test and anti-rust treatment
- Protection level can reach International Protection Standards IP55
- Long life cycle: 30 years of service life time
- With Self-lock function
- Various specifications and a wide variety of product lines
- High rotation accuracy:  $\pm 0.1^\circ$
- Strong resistance to environment: working temperature range from  $-40^\circ\text{C}$  to  $80^\circ\text{C}$
- Minimize maintenance requirements
- Sustain greater loading and titling moment than any competitor's products in the same category
- Optional grease with service life of 8 times comparing to the common grease