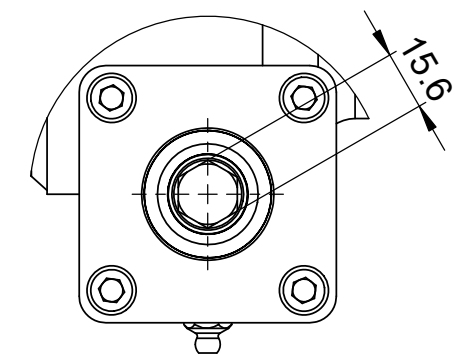
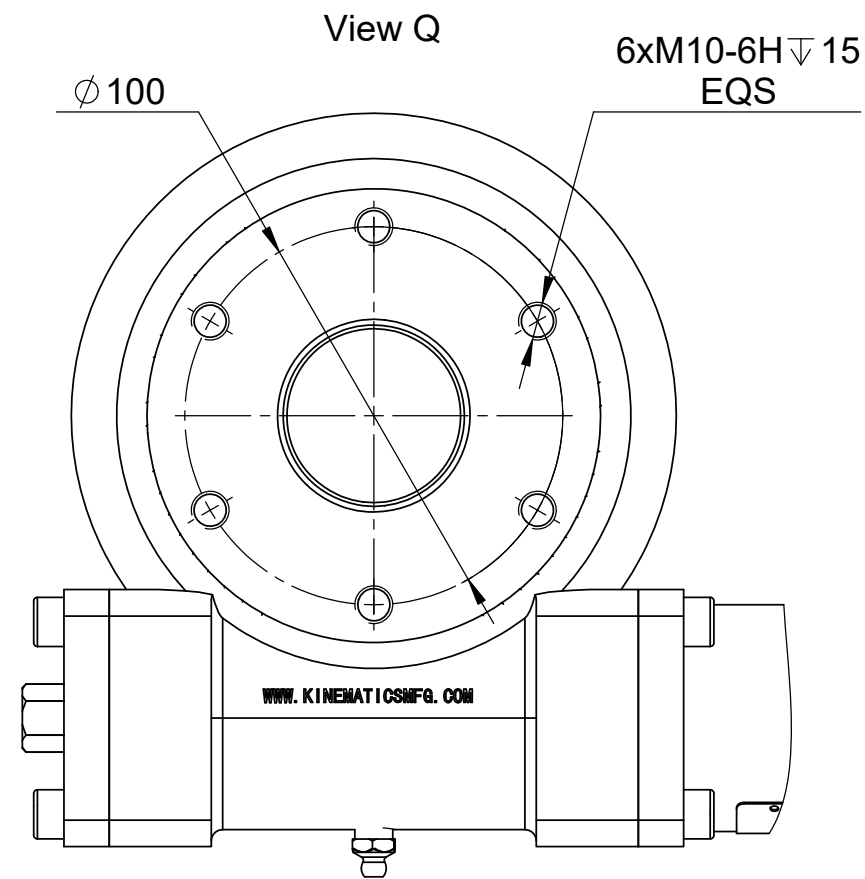


Displacement(cm³/r):39.8

Pressure (MPa)

	Max.cont.						Max.int.
	3	5	7	8.5	10	12	
2	16	27	36	44	51		
	45	40	34	28	17		
4	16	27	37	44	52	62	
	96	93	85	79	65	52	
8	15	26	36	44	52	63	
	197	195	182	176	166	154	
12	14	25	35	43	51	62	
	293	287	282	277	268	257	
15	13	24	34	42	50	62	
	371	365	360	355	347	338	
Max.cont.	10	21	31	39	48	59	
	497	492	487	480	472	463	
Max.int.	7	19	29	37	44	56	
	622	617	612	607	600	591	

Torque (N·m) 37
Speed (rpm) 607



On the dimensions with parenthesis:

- 1) These are for reference only.
- 2) This is a preliminary dimension and may vary in the actual product.
- 3) If this dimension is important to the application, please communicate this back to KMI.

DESIGNED BY	ZCS	2020/06/16
CHECKED BY	F J	2020/06/16
APPROVED BY	WMS	2020/06/16

KMI GROUP
www.kinematicsmfg.com

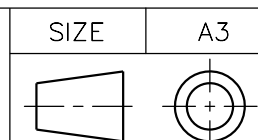
ALL PROPRIETARY RIGHTS IN THE SUBJECT MATTER HEREOF ARE RESERVED AND NO PERMISSION IS GRANTED TO REPRODUCE THIS PRINT IN WHOLE OR IN PART, OR TO DISCLOSE ANY OF THE INFORMATION TO OTHERS.

WEIGHT
14.849 Kg

SCALE
1:5

SLEWING DRIVE

SYMBOL ISO



SHEET 1/3

THE TOLERANCE NOT MENTIONED IS REFERRED TO ISO2768-VL,CASTING TOLERANCE ISO 8062-CT10

SE3B-62MHQ-40LA-AC107

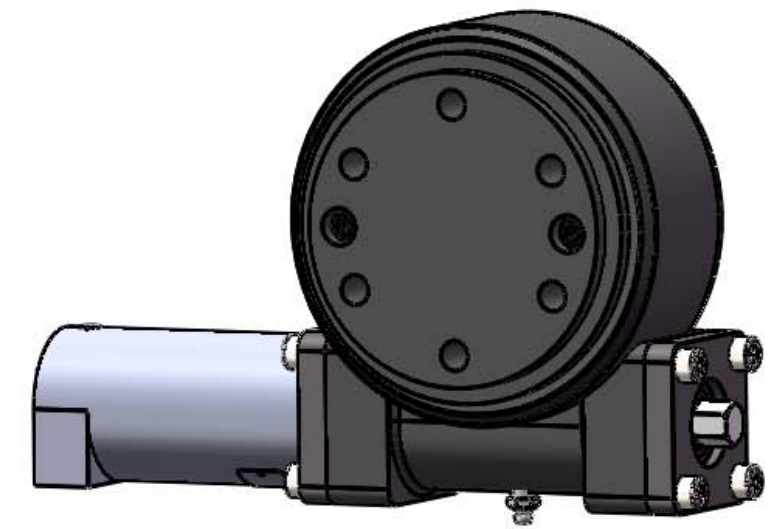
REV
B

SLEWING DRIVE PERFORMANCE PARAMETERS

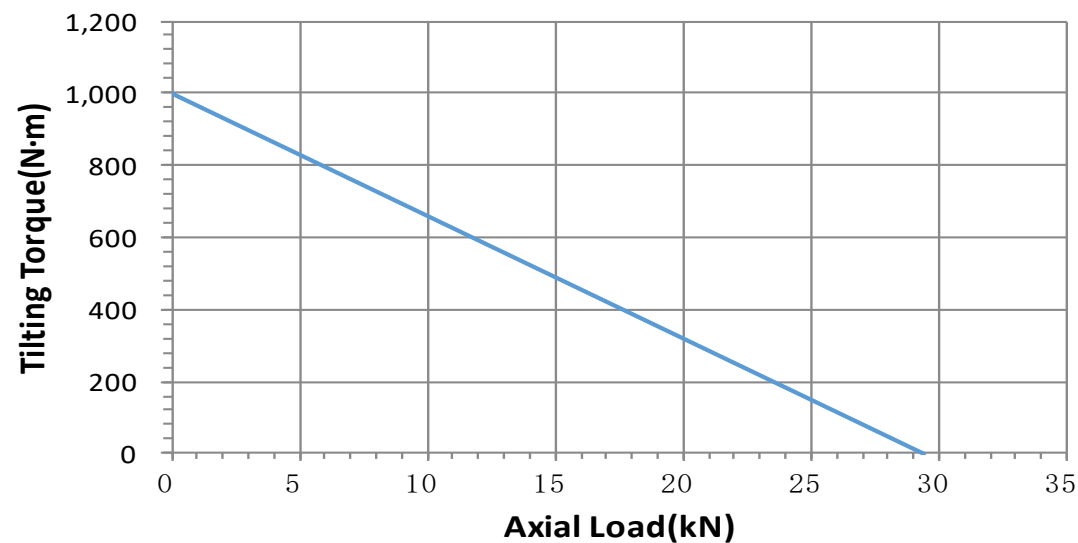
Model Code : SE3B-62MHQ-40LA-AC107

Slewing Drive Working Parameters		Hydraulic Motor		
Slewing Drive Ratio	62:1	Type Code	40-U-A-U	
Normal Output Torque	599 N.m	Displacement	39.8	cm ³ /rev
Max. Output Torque(3 Sec.)	/ N.m	Flow	2.9	L/min
Output Rated Speed	1 RPM	Pressure	7.2	Mpa
Efficiency	30%	Output Speed	62	r/min
Working Temperature Range	-20°C to +80°C	Output Torque	38	N·m
Ingress Protection (IP)	55			

Slewing Drive Capability					3D View	
Torsion Stiffness	222	Nm/mRad	Bending Stiffness	106		
					Nm/mRad	
Normal Output Torque	650		N·m	479	ft·lb	
Max. Output Torque(3 Sec.)	899		N·m	663	ft·lb	
Backwards Holding Torque	3,000		N·m	2,213	ft·lb	
Tilting Torque	1,000		N·m	738	ft·lb	
Static Radial Rating	16.60		kN	3,732	lb	
Static Axial Rating	29.40		kN	6,609	lb	
Dynamic Radial Rating	8.40		kN	1,888	lb	
Dynamic Axial Rating	9.60		kN	2,158	lb	



Tilting Torque VS Axial Load



DESIGNED BY	ZCS	2020/06/16	KMI GROUP www.kinematicsmfg.com		
CHECKED BY	F J	2020/06/16			
APPROVED BY	WMS	2020/06/16			
ALL PROPRIETARY RIGHTS IN THE SUBJECT MATTER HEREOF ARE RESERVED AND NO PERMISSION IS GRANTED TO REPRODUCE THIS PRINT IN WHOLE OR IN PART, OR TO DISCLOSE ANY OF THE INFORMATION TO OTHERS.			WEIGHT	SCALE	SLEWING DRIVE
			14.849 Kg	1:5	
SYMBOL ISO	SIZE	A3	SHEET	3/3	SE3B-62MHQ-40LA-AC107
	THE TOLERANCE NOT MENTIONED IS REFERRED TO ISO2768-VL,CASTING TOLERANCE ISO 8062-CT10				