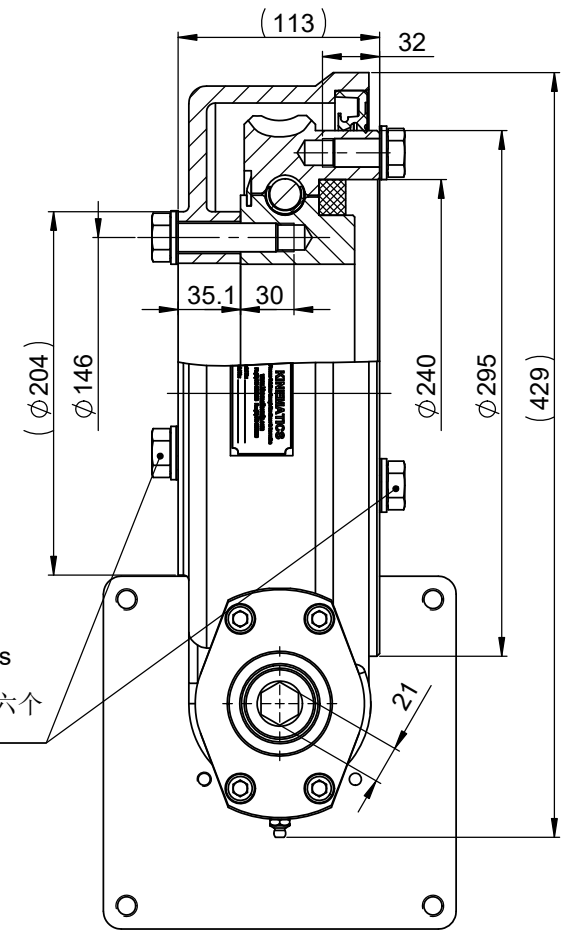


6x Bolts & Washers
Only For Shipping
Two Sides (两侧六个
螺栓仅用于发运)



NOTE:

1. All exposed surfaces of the slewing bearing will not be painted (回转支承所有外露面均不油漆)
2. Grease: KG-2-B-2M46, tooth needs full grease (油脂使用KG-2-B-2M46, 齿面涂抹油脂)

On the dimensions with parenthesis:

- 1) These are for reference only.
- 2) This is a preliminary dimension and may vary in the actual product.
- 3) If this dimension is important to the application, please communicate this back to KMI.

DESIGNED BY	CKL	2021/04/30
CHECKED BY	ZCS	2021/04/30
APPROVED BY	WMS	2021/04/30

KMI GROUP
www.kinematicsmfg.com

ALL PROPRIETARY RIGHTS IN THE SUBJECT MATTER HEREOF ARE RESERVED, AND NO PERMISSION IS GRANTED TO REPRODUCE THIS PRINT IN WHOLE OR IN PART, OR TO DISCLOSE ANY OF THE INFORMATION TO OTHERS.	WEIGHT	SCALE
	63.049 Kg	1:3

SLEWING DRIVE

SYMBOL ISO	SIZE	A3	SHEET	1/3
			THE TOLERANCE NOT MENTIONED IS REFERRED TO ISO 2768-VL CASTING TOLERANCE ISO 8062-CT10	

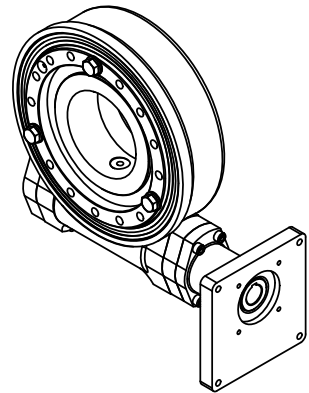
HWE9B-29MHA-32MR-AC107

REV
C

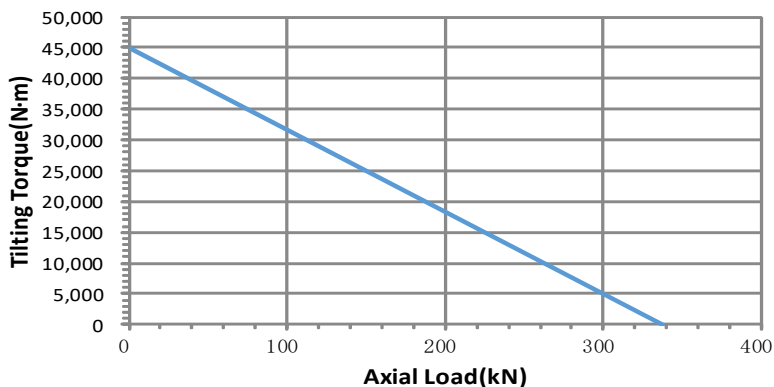
SLEWING DRIVE PERFORMANCE PARAMETERS

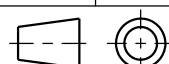
Model Code : -----

Slewing Drive Working Parameters/回转装置工作性能		Motor Parameters/马达参数	
Slewing Drive Ratio/减速比	58:2	Type Code/代号	
Normal Output Torque/额定扭矩	4,480 N.m	Displacement/排量	cm ³ /rev
Max. Output Torque(3 s.)/最大扭矩 (3秒)	8,960N.m	Output Speed/输出转速	rpm
Output Rated Speed /输出速度	--- rpm	Flow/流量	L/min
Efficiency/效率	65%	Pressure/压力	Mpa
Working Temperature Range/工作温度	- 20℃ ~ +80℃	Output Torque/输出扭矩	N·m
Ingress Protection (IP)/防护等级	IP66	IP/防护等级	

Slewing Drive Capability					3D View	
Torsion Stiffness/扭转刚度	/	Nm/mRad	Bending Stiffness/弯曲刚度	2,378	Nm/mRad	
Normal Output Torque/额定扭矩		4,480	N·m	3,304	ft·lb	
Max. Output Torque(3 s.)/最大扭矩 (3秒)		8,960	N·m	6,609	ft·lb	
Static Backwards Holding Torque/最大保持力矩		39,083	N·m	28,828	ft·lb	
Tilting Torque/倾覆力矩		45,000	N·m	33,192	ft·lb	
Static Radial Rating/静态径向力		135.00	kN	30,348	lb	
Static Axial Rating/静态轴向力		337.40	kN	75,848	lb	
Dynamic Radial Rating/动态径向力		70.90	kN	15,938	lb	
Dynamic Axial Rating/动态轴向力		81.00	kN	18,209	lb	

Tilting Torque VS Axial Load



DESIGNED BY	CKL	2021/04/30	KMI GROUP www.kinematicsmfg.com	
CHECKED BY	ZCS	2021/04/30		
APPROVED BY	WMS	2021/04/30		
ALL PROPRIETARY RIGHTS IN THE SUBJECT MATTER HEREOF ARE RESERVED, AND NO PERMISSION IS GRANTED TO REPRODUCE THIS PRINT IN WHOLE OR IN PART, OR TO DISCLOSE ANY OF THE INFORMATION TO OTHERS.		WEIGHT	SCALE	SLEWING DRIVE
SYMBOLE ISO		63.049 Kg	1:5	
SIZE	A3	SHEET	3/3	HWE9B-29MHA-32MR-AC107
		THE TOLERANCE NOT MENTIONED IS REFERRED TO ISO2768-VL,CASTING TOLERANCE ISO 8062-CT10		
				C